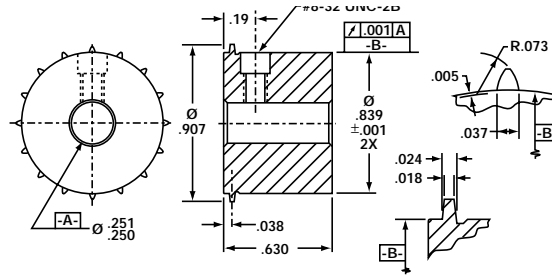


.1667 PITCH

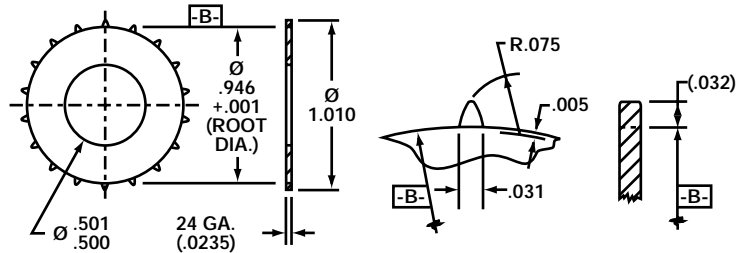
SPROCKETS FOR FILM & CIRCUIT COMPONENTS

Part No: S116B025D
Pitch: .1667
No. Teeth: 16
Material: 303 S/S
Applications: Can be used with Super 8mm film per ANSI/SMPTE 149-1988 or 16mm wide film perforated to Super 8 standards.



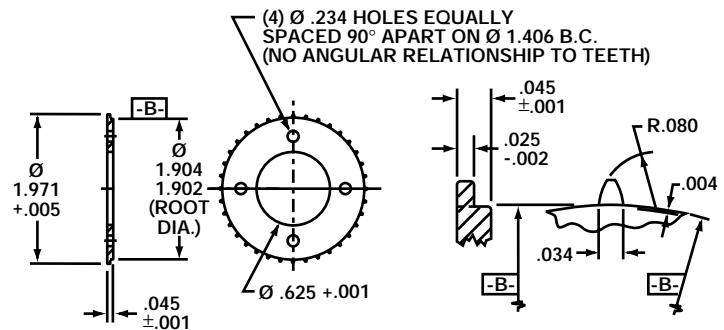
Can be readily machined to a narrower width.
 Set screw included.

Part No: S118A50E
Pitch: .1667
No. Teeth: 18
Material: 316 S/S
Applications: This wafer can be joined to a wider body to suit various applications.



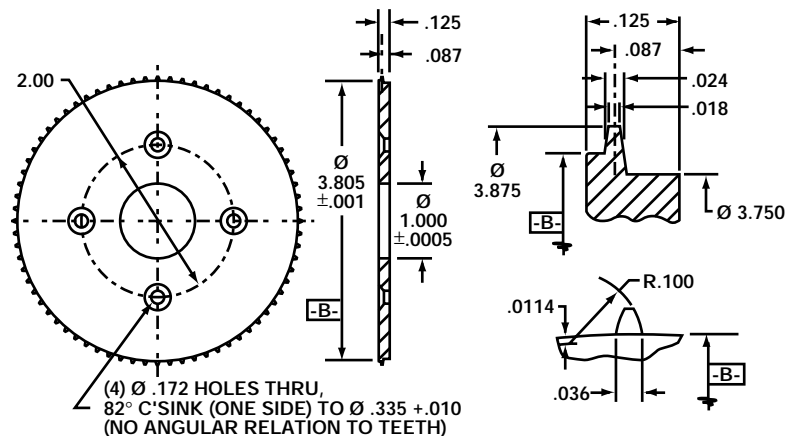
The material is resistant to most chemicals used in film processing equipment and is non-magnetic.

Part No: S136A62E
Pitch: .1667
No. Teeth: 36
Material: 316 S/S
Applications: Corrosion resistant and non-magnetic material makes this sprocket suitable for a variety of applications.



Mounting holes are not related to the teeth.

Part No: S172A100J
Pitch: .1667
No. Teeth: 72
Material: 2024-T3 Aluminum
Applications: Lightweight sprocket with a film supporting diameter is suitable for use in counting equipment, editors, etc.



Mounting holes are not related to the teeth.