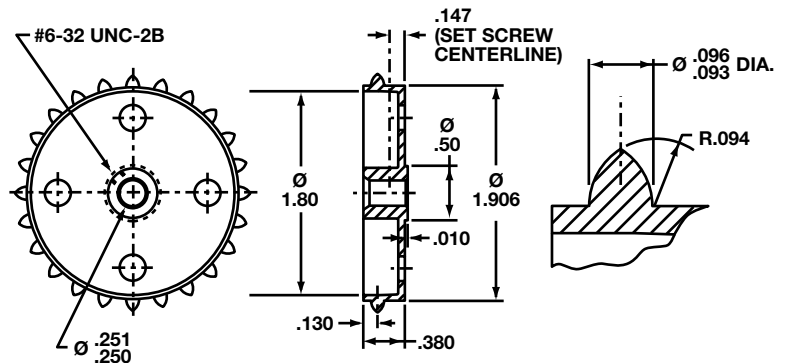


.250 & .375 PITCH

ROUND TOOTH SPROCKETS

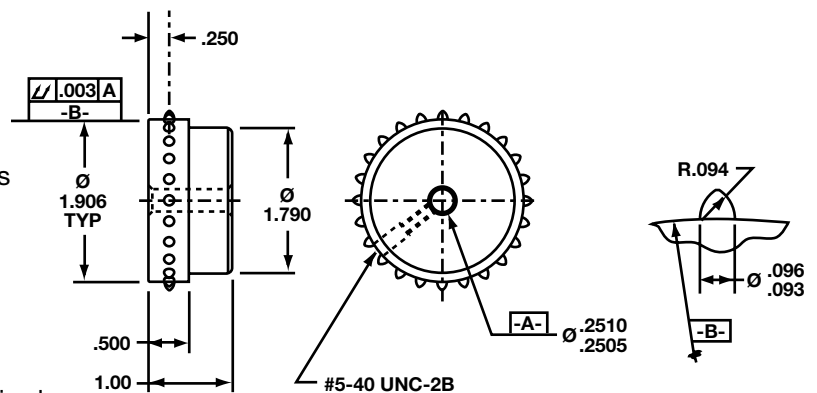
Part No: C24S25S
Pitch: .250
No. Teeth: 24
Material: Delrin
Applications: This sprocket is designed to be bonded to a drum which has been turned down to 1.802 diameter for a length of .140.



Set screw included. Tapped hole not related to teeth.

Note: This item is also available as a .500 pitch 12 tooth sprocket (order L12S25S).

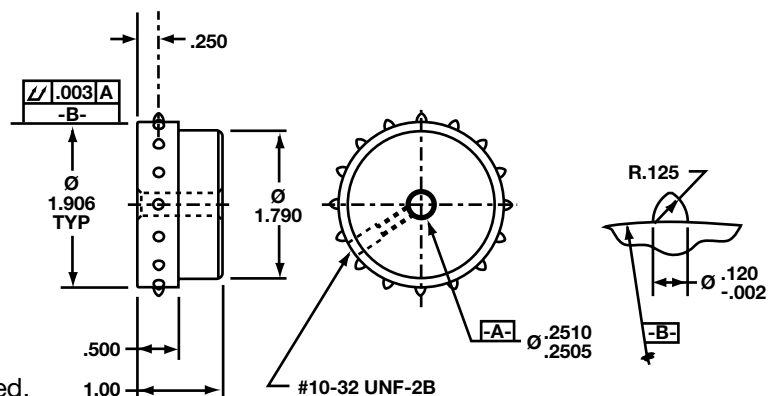
Part No: C24F25K
Pitch: .250
No. Teeth: 24
Material: 6061 Aluminum
Applications: When the application requires a material somewhat more wear resistant than plastic, this item may prove suitable.



Set screw included.

This sprocket can be readily anodized if desired.

Part No: K16F25K
Pitch: .375
No. Teeth: 16
Material: 6061 Aluminum
Applications: This sprocket may be used alone or joined to a drum to support a strip chart.



Set screw included.

This sprocket can be readily anodized if desired.



QUALITY . . . ABOVE ALL ELSE.