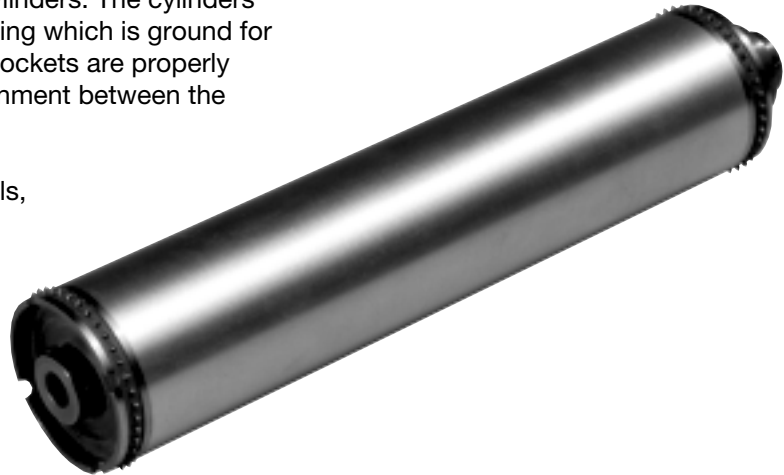


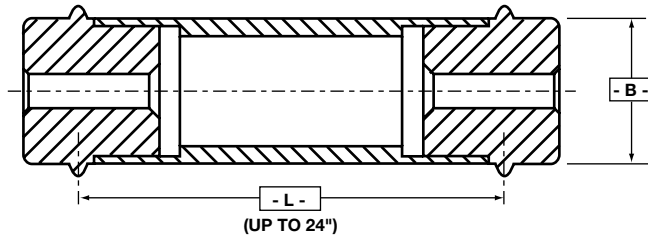
CHART DRIVE SPROCKET ASSEMBLIES

LaVeZZi provides a line of custom chart drive sprocket drum assemblies by combining the sprockets described on pages 20-22 with matching ground aluminum cylinders. The cylinders are made of 6061 extruded aluminum tubing which is ground for a smooth writing surface. The chosen sprockets are properly aligned and bonded to insure perfect alignment between the two rows of teeth.

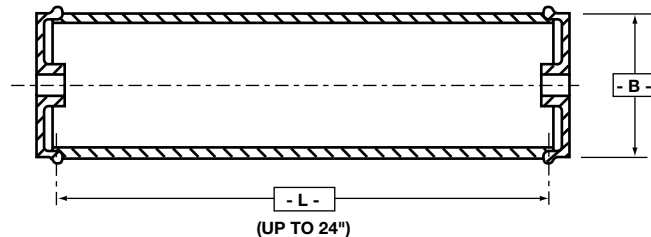
When transporting more abrasive materials, the wear life of the sprocket teeth can be improved by adding a hardcoat finish.



If a sprocket is required at one end only, the other end can be supplied with an end cap (see below).



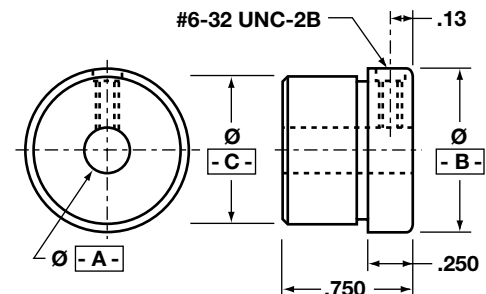
To order, simply specify the sprocket type and the length ('L') of the finished assembly.



For special additions or modifications, please call, fax or write our engineering department for assistance.

These end caps can be matched with sprockets when a single sprocket drive assembly is desired.

End Cap Part No.	"A" DIA.	"B" DIA.	"C" DIA.
6003	0.250	0.9535	0.840
6004	0.250	1.907	1.790



QUALITY . . . ABOVE ALL ELSE.