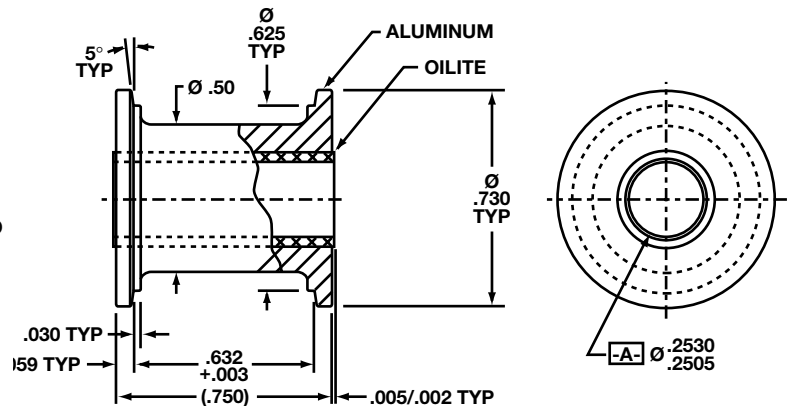


16, 35 & 70 MM

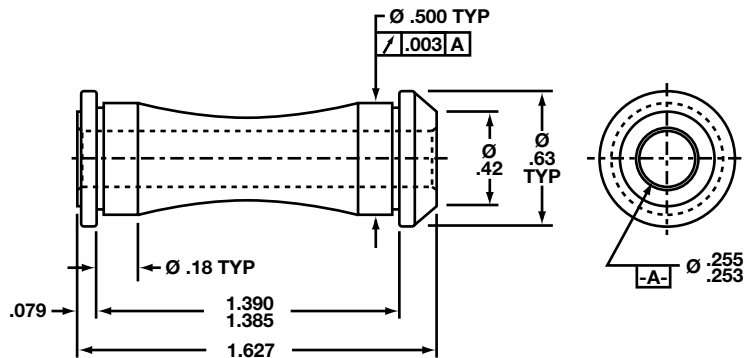
GUIDE ROLLERS

Part No: AOR2-25
Name: 16mm Pad Roller
Material: Aluminum with Oilite Bearing
Applications: This anodized roller is used to hold 16mm film against any stock or custom 16mm (.300 pitch) sprocket.



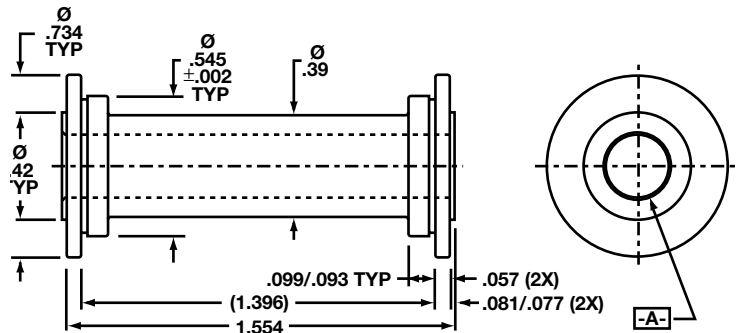
May be mounted on the 2RS25 stud (see page 17).

Part No: RK110-2
Name: 35mm Roller
Material: Delrin (Black)
Applications: This machined roller is used to guide or apply tension when used with 35mm wide material.



May be mounted on the RK112-2 stud (see page 17).

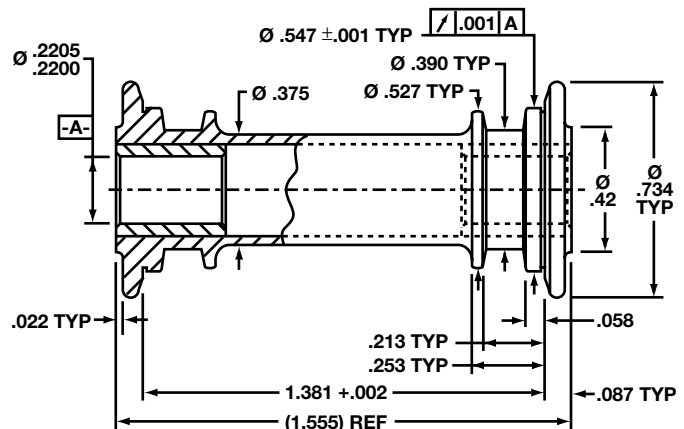
Part No: MNR221, MNR251
Name: Pad Roller
Material: Delrin (Black)
Applications: These machined pad rollers are used in film transport equipment to hold film against the sprocket.



Available in a 70mm wide version (MNR7-221).

Part No.	Dia. -A-
MNR221	.223/.221
MNR251	.255/.253

Part No: SOR4-22
Name: Pad Roller
Material: Steel with Oilite Bearing
Applications: Designed for use with *Posi-Trol* sprockets (page 11) but can be used with any standard 35mm sprocket.

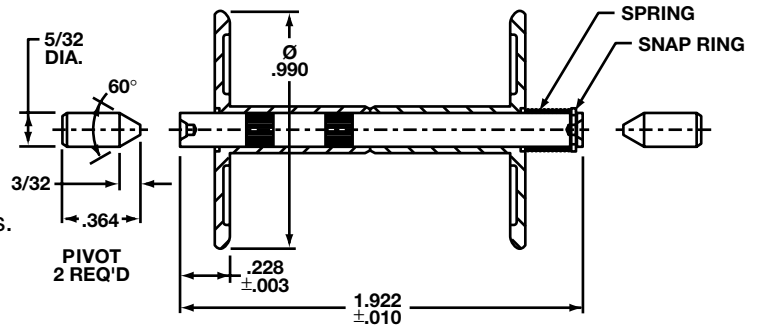


Diameters are ground concentric to the bore.
 May be mounted on the C12 stud (see page 17).

16, 35 & 70 MM

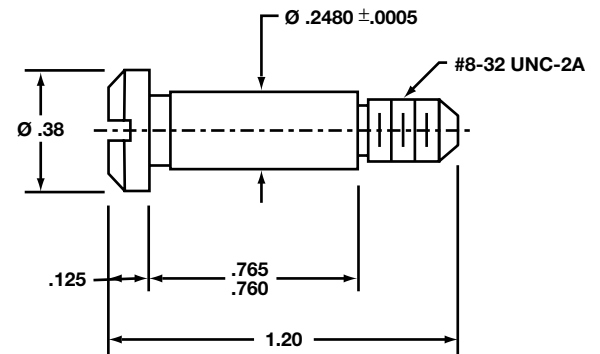
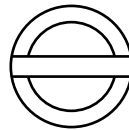
FILM TRANSPORT ACCESSORIES

Part No: LGR100
Name: 35mm Guide Roller Assembly
Material: Hardened Steel
Applications: This spring loaded lateral guide assembly is meant to control film weave in various applications.



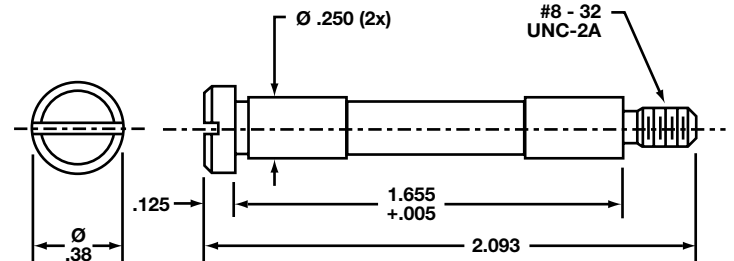
The (2) pivot pins (included) are designed to hold the assembly between centers.

Part No: 2RS25
Name: 16mm Roller Stud
Material: Steel
Applications: This ground stud is to be used with the AOR2-25 roller shown on page 16.



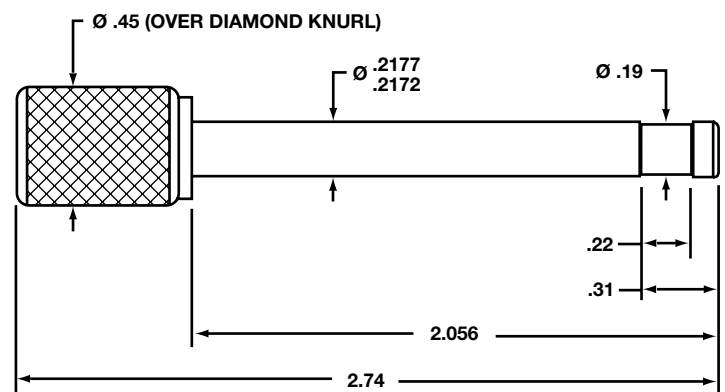
Designed to be threaded into a plate or placed in a thru hole and secured with a locknut.

Part No: RK112-2
Name: 35mm Roller Stud
Material: Steel with a Dry Lube Finish
Applications: This ground stud with a permanent dry lubrication coating is designed to be used with the RK110-2 roller on page 16.



Designed to be threaded into a plate or placed in a thru hole and secured with a locknut.

Part No: C12
Name: Roller Stud
Material: Stainless Steel/Anodized Knob
Applications: This ground stud is designed to be used for mounting the MNR221 or SOR4-22 pad rollers.



Also available in a length suitable for holding the MNR7-221 roller (order C12-70).



QUALITY . . . ABOVE ALL ELSE.