

.1870 PITCH

POSI-TROL™ POSITIVE CONTROL SPROCKETS

To minimize side-to-side motion of film or other perforated media, LaVezzi offers the Posi-Trol design.

The tooth form of the *Posi-Trol* line has been dimensioned to fill the perforation (on one band) as fully as possible. This allows the material to be guided at the perforations and eliminates the need for guide flanges, rollers, rails or shoes.

The wide teeth have been properly machined to insure no interference with the corner radii of the film or other materials. The narrow teeth are dimensioned for driving only (see Figures 1 and 2).

Note that this design can be modified to suit various application requirements. For example, the radial tooth width can be increased to minimize backlash. Also, this tooth form can be utilized with any size sprocket with any number of teeth.

Caution! The *Posi-Trol* line may not be used with material perforated per ANSI-SMPTE Standard 102-1991.

Figure 1

The four corners of the wide tooth band have been radiused to avoid interference with the fillet radius. The amount of clearance can be modified to suit a particular application.

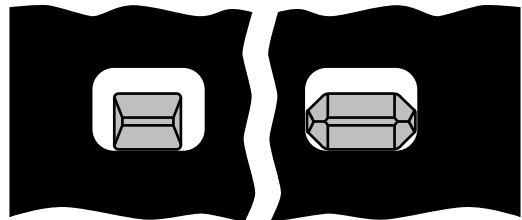
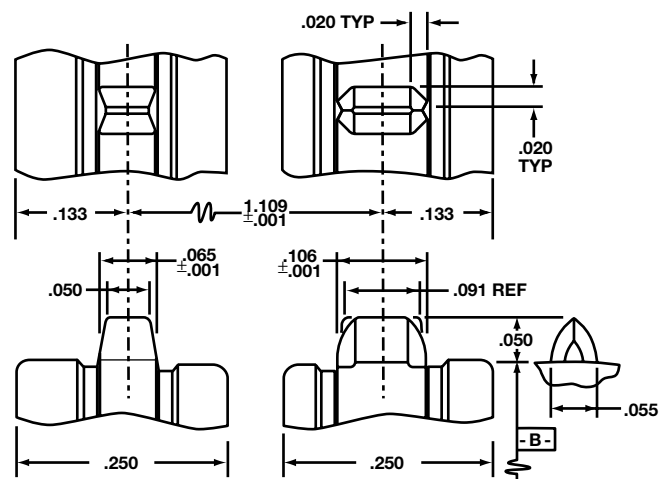


Figure 2

The wide (right) tooth band fills the perforation width while the narrow band allows for non-uniform lateral spacing and also drives the material.

The basic tooth form remains the same on all *Posi-Trol* sprockets with only the tooth arc changing to accommodate various sizes and applications.

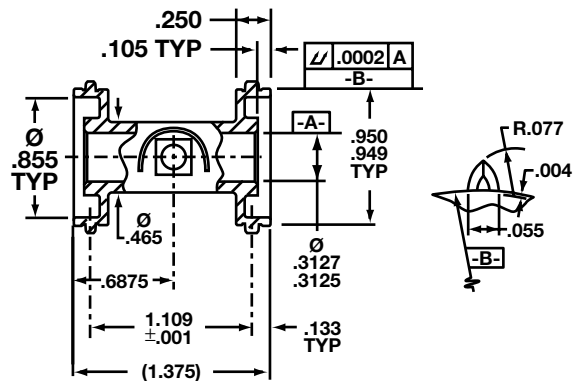


.1870 PITCH

POSI-TROL™ POSITIVE CONTROL SPROCKETS

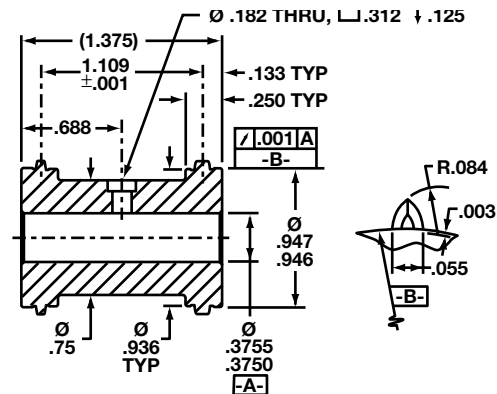
Part No: L2SP31
Pitch: .1870
No. Teeth: 16
Material: Case Hardened 416 S/S
Applications: Identical to part #416T31B as described on page 5 except with the Posi-Trol tooth form.

Screw and nut included.



Part No: L3RS37
Pitch: .1870
No. Teeth: 16
Material: Case Hardened 416 S/S
Applications: A rigid drive sprocket with the Posi-Trol tooth form.

Note: This same item is available in a .3130/.3125 diameter bore with a counter-bored hole for a #6-32 screw for mounting on a shaft with a tapped hole (order L3CP31).



Part No: L3XL37
Pitch: .1870
No. Teeth: 24
Material: Case Hardened Steel
Applications: This item is identical to Part Number 424CG37B as described on page 6 except with the Posi-Trol tooth form.

A special dog point set screw with a Ø.1245/.1240 tip is included.

