

TRUE POSITION LOCATORS

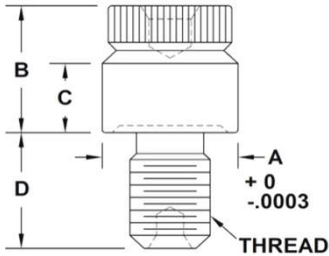
TRU-POS™



	PART NUMBER	THREAD	A	B	C	D	PRICE EACH
<p>UNIFIED SERIES</p> <p>Quantity Discounts Available!</p>	1TP0080	0 - 80 UNF	.1700	.25	.16	.12	\$95.00
	1TP0164	1 - 64 UNC	.1700	.25	.16	.12	\$95.00
	1TP0172	1 - 72 UNF	.1700	.25	.16	.12	\$168.00
	1TP0256	2 - 56 UNC	.1700	.25	.17	.15	\$88.00
	1TP0264	2 - 64 UNF	.1700	.25	.17	.15	\$88.00
	1TP0348	3 - 48 UNC	.2000	.25	.17	.15	\$88.00
	1TP0356	3 - 56 UNF	.2000	.25	.17	.15	\$99.00
	1TP0440	4 - 40 UNC	.2000	.25	.17	.15	\$86.00
	1TP0448	4 - 48 UNF	.2000	.25	.17	.15	\$89.00
	1TP0540	5 - 40 UNC	.2000	.25	.17	.15	\$97.00
	1TP0544	5 - 44 UNF	.2000	.25	.17	.15	\$103.00
	1TP0632	6 - 32 UNC	.2500	.25	.17	.18	\$83.00
	1TP0640	6 - 40 UNF	.2500	.25	.17	.18	\$92.00
	1TP0648	6 - 48 UNS	.2500	.25	.17	.18	\$116.00
	1TP0832	8 - 32 UNC	.2500	.35	.21	.18	\$83.00
	1TP0836	8 - 36 UNF	.2500	.35	.21	.18	\$86.00
	1TP0840	8 - 40 UNS	.2500	.35	.21	.18	\$170.00
	1TP1024	10 - 24 UNC	.3100	.35	.21	.20	\$82.00
	1TP1028	10 - 28 UNS	.3100	.35	.21	.20	\$126.00
	1TP1032	10 - 32 UNF	.3100	.35	.21	.20	\$85.00
	1TP1036	10 - 36 UNS	.3100	.35	.21	.20	\$95.00
	1TP1048	10 - 48 UNS	.3100	.35	.21	.20	\$176.00
	1TP1224	12 - 24 UNC	.3600	.38	.23	.22	\$87.00
	1TP1228	12 - 28 UNF	.3600	.38	.23	.22	\$100.00
	1TP1232	12 - 32 UNEF	.3600	.38	.23	.22	\$126.00
	1TP1764	11/64 - 64 UNS	.3100	.35	.21	.20	\$134.00
	1TP2520	1/4 - 20 UNC	.4000	.40	.25	.25	\$85.00
	1TP2524	1/4 - 24 UNS	.4000	.40	.25	.25	\$97.00
	1TP2528	1/4 - 28 UNF	.4000	.40	.25	.25	\$88.00
	1TP2532	1/4 - 32 UNEF	.4000	.40	.25	.25	\$91.00
	1TP2536	1/4 - 36 UNS	.4000	.40	.25	.25	\$109.00
	1TP2540	1/4 - 40 UNS	.4000	.40	.25	.25	\$117.00
	1TP3118	5/16 - 18 UNC	.4000	.40	.25	.25	\$85.00
	1TP3120	5/16 - 20 UN	.4000	.40	.25	.25	\$179.00
	1TP3124	5/16 - 24 UNF	.4000	.40	.25	.25	\$87.00
1TP3128	5/16 - 28 UN	.4000	.40	.25	.25	\$87.00	
1TP3132	5/16 - 32 UNEF	.4000	.40	.25	.25	\$135.00	
1TP3424	11/32 - 24 UNS	.4500	.45	.30	.30	\$152.00	
1TP3432	11/32 - 32 UNS	.4500	.45	.30	.28	\$181.00	
1TP3716	3/8 - 16 UNC	.5000	.50	.33	.30	\$85.00	
1TP3718	3/8 - 18 UNS	.5000	.50	.33	.30	\$179.00	
1TP3720	3/8 - 20 UN	.5000	.50	.33	.30	\$168.00	
1TP3724	3/8 - 24 UNF	.5000	.50	.33	.30	\$85.00	
1TP3728	3/8 - 28 UN	.5000	.50	.33	.30	\$86.00	

Continued on next page

**UNIFIED
SERIES
(CONTINUED)**

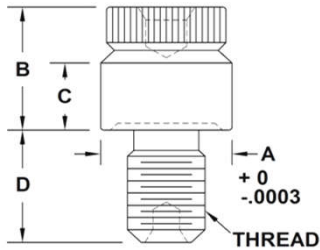


**Quantity
Discounts
Available!**

PART NUMBER	THREAD	A	B	C	D	PRICE EACH
1TP3732	3/8 - 32 UNEF	.5000	.50	.33	.30	\$109.00
1TP3756	3/8 - 56 UN	.5000	.50	.33	.30	\$167.00
1TP4314	7/16 - 14 UNC	.5500	.50	.33	.35	\$85.00
1TP4320	7/16 - 20 UNF	.5500	.50	.33	.35	\$88.00
1TP4324	7/16 - 24 UNS	.5500	.50	.33	.35	\$130.00
1TP4332	7/16 - 32 UN	.5500	.50	.33	.35	\$88.00
1TP5013	1/2 - 13 UNC	.6200	.50	.33	.40	\$85.00
1TP5020	1/2 - 20 UNF	.6200	.50	.33	.40	\$87.00
1TP5028	1/2 - 28 UNEF	.6200	.50	.33	.40	\$167.00
1TP5032	1/2 - 32 UN	.6200	.50	.33	.40	\$167.00
1TP5612	9/16 - 12 UNC	.6800	.50	.33	.45	\$95.00
1TP5618	9/16 - 18 UNF	.6800	.50	.33	.45	\$95.00
1TP5620	9/16 - 20 UN	.6800	.50	.33	.45	\$98.00
1TP5624	9/16 - 24 UNEF	.6800	.50	.33	.45	\$98.00
1TP5632	9/16 - 32 UN	.6800	.50	.33	.45	\$221.00
1TP6211	5/8 - 11 UNC	.7500	.60	.43	.40	\$95.00
1TP6216	5/8 - 16 UN	.7500	.60	.43	.40	\$142.00
1TP6218	5/8 - 18 UNF	.7500	.60	.43	.40	\$98.00
1TP6220	5/8 - 20 UN	.7500	.60	.43	.40	\$102.00
1TP6224	5/8 - 24 UNEF	.7500	.60	.43	.40	\$119.00
1TP6232	5/8 - 32 UN	.7500	.60	.43	.40	\$110.00
1TP6811	11/16 - 11 UNC	.8700	.60	.43	.50	\$134.00
1TP6816	11/16 - 16 UN	.8700	.60	.43	.50	\$153.00
1TP6820	11/16 - 20 UN	.8700	.60	.43	.50	\$105.00
1TP6824	11/16 - 24 UNEF	.8700	.60	.43	.50	\$105.00
1TP6832	11/16 - 32 UN	.8700	.60	.43	.50	\$105.00
1TP7510	3/4 - 10 UNC	.8700	.60	.43	.50	\$95.00
1TP7516	3/4 - 16 UNF	.8700	.60	.43	.50	\$95.00
1TP7518	3/4 - 18 UNS	.8700	.60	.43	.50	\$126.00
1TP7520	3/4 - 20 UNEF	.8700	.60	.43	.50	\$98.00
1TP7524	3/4 - 24 UNS	.8700	.60	.43	.50	\$100.00
1TP7528	3/4 - 28 UN	.8700	.60	.43	.50	\$210.00
1TP8116	13/16 - 16 UNF	.9300	.60	.43	.50	\$135.00
1TP8120	13/16 - 20 UNEF	.9300	.60	.43	.50	\$168.00
1TP8709	7/8 - 9 UNC	1.0000	.60	.43	.50	\$123.00
1TP8714	7/8 - 14 UNF	1.0000	.60	.43	.50	\$123.00
1TP8716	7/8 - 16 UN	1.0000	.60	.43	.50	\$137.00
1TP8718	7/8 - 18 UNS	1.0000	.60	.43	.50	\$137.00
1TP8720	7/8 - 20 UNEF	1.0000	.60	.43	.50	\$124.00
1TP8728	7/8 - 28 UN	1.0000	.60	.43	.50	\$315.00
1TP8732	7/8 - 32 UN	1.0000	.60	.43	.50	\$336.00
1TP9309	15/16 - 9 UNS	1.1000	.60	.43	.50	\$336.00
1TP9312	15/16 - 12 UN	1.1000	.60	.43	.50	\$252.00
1TP9316	15/16 - 16 UN	1.1000	.60	.43	.50	\$152.00
1TP9320	15/16 - 20 UNEF	1.1000	.60	.43	.50	\$135.00
1TP10008	1" - 8 UNC	1.2000	.80	.60	.60	\$135.00
1TP10012	1" - 12 UNF	1.2000	.80	.60	.60	\$152.00
1TP10014	1" - 14 UNS	1.2000	.80	.60	.60	\$150.00
1TP10016	1" - 16 UN	1.2000	.80	.60	.60	\$205.00
1TP10020	1" - 20 UNEF	1.2000	.80	.60	.60	\$197.00
1TP10028	1" - 28 UN	1.2000	.80	.60	.60	\$244.00

Continued on next page

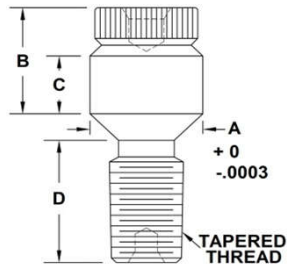
**UNIFIED
SERIES
(CONTINUED)**



**Quantity
Discounts
Available!**

PART NUMBER	THREAD	A	B	C	D	PRICE EACH
1TP1.0612	1-1/16 - 12 UN	1.2400	.80	.60	.60	\$217.00
1TP1.0616	1-1/16 - 16 UN	1.2400	.80	.60	.60	\$244.00
1TP1.0618	1-1/16 - 18 UNEF	1.2400	.80	.60	.60	\$255.00
1TP1.0620	1-1/16 - 20 UN	1.2400	.80	.60	.60	\$255.00
1TP1.1207	1-1/8 - 7 UNC	1.3200	.90	.65	.80	\$273.00
1TP1.1208	1-1/8 - 8 UN	1.3200	.90	.65	.80	\$269.00
1TP1.1212	1-1/8 - 12 UNF	1.3200	.90	.65	.80	\$294.00
1TP1.1216	1-1/8 - 16 UN	1.3200	.90	.65	.80	\$320.00
1TP1.1218	1-1/8 - 18 UNEF	1.3200	.90	.65	.80	\$269.00
1TP1.1812	1-3/16 - 12 UN	1.3800	1.00	.70	.83	\$320.00
1TP1.1816	1-3/16 - 16 UN	1.3800	1.00	.70	.83	\$305.00
1TP1.1818	1-3/16 - 18 UNEF	1.3800	1.00	.70	.83	\$305.00
1TP1.1820	1-3/16 - 20 UN	1.3800	1.00	.70	.83	\$320.00
1TP1.1824	1-3/16 - 24 UN	1.3800	1.00	.70	.83	\$255.00
1TP1.2507	1-1/4 - 7 UNC	1.4500	1.06	.70	.90	\$368.00
1TP1.2508	1-1/4 - 8 UN	1.4500	1.06	.70	.90	\$298.00
1TP1.2512	1-1/4 - 12 UNF	1.4500	1.06	.70	.90	\$337.00
1TP1.2518	1-1/4 - 18 UNEF	1.4500	1.06	.70	.90	\$337.00
1TP1.2520	1-1/4 - 20 UN	1.4500	1.06	.70	.90	\$359.00
1TP1.3112	1-5/16 - 12 UN	1.5000	1.06	.70	.90	\$255.00
1TP1.3116	1-5/16 - 16 UN	1.5000	1.06	.70	.90	\$273.00
1TP1.3118	1-5/16 - 18 UNEF	1.5000	1.06	.70	.90	\$281.00
1TP1.3120	1-5/16 - 20 UN	1.5000	1.06	.70	.90	\$281.00
1TP1.3706	1-3/8 - 6 UN	1.5500	1.06	.70	.90	\$560.00
1TP1.3708	1-3/8 - 8 UN	1.5500	1.06	.70	.90	\$298.00
1TP1.3712	1-3/8 - 12 UNF	1.5500	1.06	.70	.90	\$294.00
1TP1.3716	1-3/8 - 16 UN	1.5500	1.06	.70	.90	\$441.00
1TP1.3718	1-3/8 - 18 UNEF	1.5500	1.06	.70	.90	\$357.00
1TP1.3728	1-3/8 - 28 UN	1.5500	1.06	.70	.90	\$580.00
1TP1.4316	1-7/16 - 16 UN	1.6400	1.08	.70	.90	\$357.00
1TP1.4318	1-7/16 - 18 UNEF	1.6400	1.08	.70	.90	\$326.00
1TP1.5006	1-1/2 - 6 UNC	1.7200	1.10	.70	.90	\$315.00
1TP1.5008	1-1/2 - 8 UN	1.7200	1.10	.70	.90	\$337.00
1TP1.5012	1-1/2 - 12 UNF	1.7200	1.10	.70	.90	\$281.00
1TP1.5016	1-1/2 - 16 UN	1.7200	1.10	.70	.90	\$305.00
1TP1.5018	1-1/2 - 18 UNEF	1.7200	1.10	.70	.90	\$360.00
1TP1.5616	1-9/16 - 16 UN	1.7800	1.10	.70	.90	\$336.00
1TP1.5620	1-9/16 - 20 UN	1.7800	1.10	.70	.90	\$368.00
1TP1.6208	1-5/8 - 8 UN	1.8500	1.10	.70	.90	\$352.00
1TP1.6212	1-5/8 - 12 UN	1.8500	1.10	.70	.90	\$352.00
1TP1.6216	1-5/8 - 16 UN	1.8500	1.10	.70	.90	\$352.00
1TP1.6218	1-5/8 - 18 UNEF	1.8500	1.10	.70	.90	\$352.00
1TP1.7512	1-3/4 - 12 UN	2.0000	1.10	.70	.90	\$427.00
1TP1.7518	1-3/4 - 18 UNS	2.0000	1.10	.70	.90	\$525.00
1TP1.8116	1-13/16 - 16 UN	2.0500	1.10	.70	.90	\$683.00
1TP1.8712	1-7/8 - 12 UNS	2.1000	1.10	.70	.90	\$359.00
1TP2.0008	2 - 8 UN	2.2200	1.20	.80	.90	\$414.00
1TP2.0016	2 - 16 UN	2.2200	1.20	.80	.90	\$980.00
1TP2.2512	2-1/4 - 12 UN	2.4700	1.40	1.00	2.40	\$443.00
1TP2.5012	2-1/2 - 12 UN	2.7200	1.60	1.20	1.25	\$467.00
1TP3.0008	3 - 8 UN	3.2200	1.60	1.20	1.00	\$1,575.00
1TP3.0012	3 - 12 UN	3.2200	1.60	1.20	1.00	\$1,250.00
1TP3.1208	3-1/8 - 8 UN	3.5000	1.60	1.20	1.00	\$630.00
1TP3.2508	3-1/4 - 8 UN	3.5000	1.60	1.20	1.00	\$1,155.00

	PART NUMBER	THREAD	A	B	C	D	PRICE EACH
TAPERED UNIFIED SERIES	1TP0080 - T	0 - 80 UNF	.1700	.25	.16	.13	\$133.00
	1TP0172 - T	1 - 72 UNF	.1700	.25	.16	.17	\$383.00
	1TP0256 - T	2 - 56 UNC	.1700	.25	.17	.19	\$109.00
	1TP0348 - T	3 - 48 UNC	.2000	.25	.17	.20	\$170.00
	1TP0440 - T	4 - 40 UNC	.2000	.25	.17	.23	\$109.00
	1TP0448 - T	4 - 48 UNF	.2000	.25	.17	.207	\$305.00
	1TP0540 - T	5 - 40 UNF	.2500	.35	.17	.24	\$170.00
	1TP0544 - T	5 - 44 UNF	.2500	.25	.17	.24	\$137.00
	1TP0632 - T	6 - 32 UNC	.2500	.25	.17	.26	\$109.00
	1TP0640 - T	6 - 40 UNF	.2500	.25	.17	.26	\$114.00
	1TP0832 - T	8 - 32 UNC	.2500	.35	.21	.29	\$95.00
	1TP0856 - T	8 - 56 UNS	.2500	.35	.21	.19	\$221.00
	1TP1024 - T	10 - 24 UNC	.3100	.35	.21	.36	\$100.00
	1TP1032 - T	10 - 32 UNF	.3100	.35	.21	.29	\$95.00
	1TP.180-60-T	.180-60 UNS	.3100	.35	.21	.21	\$168.00
	1TP1040 - T	10 - 40 UNS	.3100	.35	.21	.25	\$195.00
	1TP1228 - T	12 - 28 UNF	.3600	.38	.23	.27	\$122.00
	1TP1232 - T	12 - 32 UNEF	.3600	.38	.23	.27	\$122.00
	1TP1236 - T	12 - 36 UNS	.3600	.38	.23	.264	\$158.00
	1TP2520 - T	1/4 - 20 UNC	.4000	.40	.25	.44	\$95.00
	1TP2528 - T	1/4 - 28 UNF	.4000	.40	.25	.35	\$99.00
	1TP2532 - T	1/4 - 32 UNEF	.4000	.40	.25	.32	\$166.00
	1TP3118 - T	5/16 - 18 UNC	.4000	.40	.25	.47	\$95.00
	1TP3124 - T	5/16 - 24 UNF	.4000	.40	.25	.37	\$109.00
	1TP3716 - T	3/8 - 16 UNC	.5000	.50	.33	.53	\$111.00
	1TP3724 - T	3/8 - 24 UNF	.5000	.50	.33	.37	\$105.00
	1TP3732 - T	3/8 - 32 UNEF	.5000	.50	.33	.37	\$122.00
	1TP4314 - T	7/16 - 14 UNC	.5500	.50	.33	.58	\$126.00
	1TP4320 - T	7/16 - 20 UNF	.5500	.50	.33	.41	\$103.00
	1TP4324 - T	7/16 - 24 UNS	.5500	.50	.33	.39	\$236.00
	1TP4328 - T	7/16 - 28 UNEF	.5500	.50	.33	.38	\$192.00
	1TP5013 - T	1/2 - 13 UNC	.6200	.50	.33	.64	\$127.00
	1TP5020 - T	1/2 - 20 UNF	.6200	.50	.33	.49	\$127.00
	1TP5612 - T	9/16 - 12 UN	.6800	.50	.33	.61	\$149.00
	1TP5618 - T	9/16 - 18 UNF	.6800	.50	.33	.19	\$149.00
	1TP5624 - T	9/16 - 24 UNEF	.6800	.50	.33	.36	\$315.00
	1TP6218 - T	5/8 - 18 UNF	.7500	.60	.43	.48	\$200.00
	1TP6224 - T	5/8 - 24 UNEF	.7500	.60	.43	.40	\$153.00
	1TP7510 - T	3/4 - 10 UNC	.8700	.60	.43	.73	\$224.00
	1TP7516 - T	3/4 - 16 UNF	.8700	.60	.43	.54	\$224.00
1TP7524 - T	3/4 - 24 UNS	.8700	.60	.43	.53	\$224.00	
1TP8116 - T	13/16 - 16 UN	.9300	.60	.43	.52	\$467.00	
1TP8120 - T	13/16 - 20 UNEF	.9300	.60	.43	.44	\$214.00	
1TP8714 - T	7/8 - 14 UNF	1.0000	.60	.43	.60	\$630.00	
1TP8720 - T	7/8 - 20 UNEF	1.0000	.60	.43	.46	\$360.00	
1TP9316 - T	15/16 - 16 UN	1.1000	.60	.43	.56	\$446.00	
1TP1.0012 - T	1-12 UNF	1.2000	.80	.60	.67	\$404.00	
1TP1.0612 - T	1-1/16 - 12 UN	1.2400	.80	.60	.67	\$609.00	
1TP1.0618 - T	1-1/16 - 18 UNEF	1.2400	.80	.60	.50	\$412.00	
1TP1.1212 - T	1-1/8 - 12 UNF	1.3200	.90	.65	.68	\$425.00	
1TP1.1812 - T	1-3/16 - 12 UN	1.3800	1.00	.70	.74	\$412.00	
1TP1.2512 - T	1-1/4 - 12 UNF	1.4500	1.06	.70	.67	\$520.00	
1TP1.5012 - T	1-1/2 - 12 UNF	1.7200	1.10	.70	.74	\$412.00	

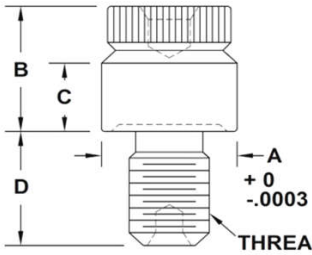


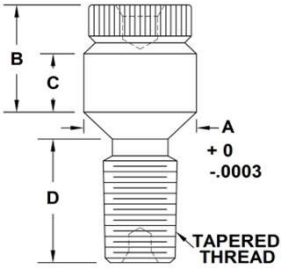
**Quantity
Discounts
Available!**

	PART NUMBER	THREAD	A	B	C	D	PRICE EACH
<p>METRIC SERIES</p>	MTPM0.8 - .2	M0.8 x .2	.1500	.25	.16	.10	\$137.00
	MTPM1 - .25	M1 X 0.25	.1700	.25	.16	.12	\$137.00
	MTPM1.2 - .25	M1.2 X 0.25	.1700	.25	.16	.15	\$137.00
	MTPM1.4 - .30	M1.4 X 0.30	.1700	.25	.16	.15	\$137.00
	MTPM1.6 - .20	M1.6 X 0.20	.1700	.25	.16	.15	\$315.00
	MTPM1.6 - .35	M1.6 X 0.35	.1700	.25	.16	.15	\$133.00
	MTPM1.8	M1.8 X 0.35	.1700	.25	.16	.15	\$137.00
	MTPM2	M2 X 0.4	.1700	.25	.16	.15	\$120.00
	MTPM2 - .25	M2 X 0.25	.1700	.25	.16	.15	\$128.00
	MTPM2.2	M2.2 X 0.45	.1700	.25	.16	.15	\$137.00
	MTPM2.5	M2.5 X 0.45	.2000	.25	.17	.15	\$137.00
	MTPM2.6 - .45	M2.6 X 0.45	.2000	.25	.17	.15	\$137.00
	MTPM3	M3 X 0.5	.2000	.25	.17	.15	\$100.00
	MTPM3 - .35	M3 X 0.35	.2000	.25	.17	.15	\$142.00
	MTPM3.5	M3.5 X 0.6	.2500	.25	.17	.18	\$100.00
	MTPM4	M4 X 0.7	.2500	.35	.21	.18	\$100.00
	MTPM4 - .5	M4 X 0.5	.2500	.35	.21	.18	\$111.00
	MTPM4.5 - .75	M4.5 X 0.75	.2800	.35	.21	.19	\$107.00
	MTPM5	M5 X 0.8	.3100	.35	.21	.20	\$100.00
	MTPM5 - .5	M5 X 0.5	.3100	.35	.21	.20	\$106.00
	MTPM6	M6 X 1.0	.4000	.40	.25	.25	\$100.00
	MTPM6 - .75	M6 X 0.75	.4000	.40	.25	.25	\$121.00
	MTPM6.5	M6.5 X 1.0	.4000	.40	.25	.25	\$173.00
	MTPM7	M7 X 1.0	.4000	.40	.25	.25	\$122.00
	MTPM8	M8 X 1.25	.4000	.40	.25	.25	\$100.00
	MTPM8 - .5	M8 X 0.5	.4000	.40	.25	.25	\$143.00
	MTPM8-.75	M8 X 0.75	.4000	.40	.25	.25	\$171.00
	MTPM8 - 1	M8 X 1.0	.4000	.40	.25	.25	\$100.00
	MTPM8 - 1.5	M8 X 1.5	.4000	.40	.25	.25	\$127.00
	MTPM9	M9 X 1.25	.5000	.50	.33	.30	\$122.00
	MTPM10	M10 X 1.5	.5000	.50	.33	.30	\$103.00
	MTPM10 - .5	M10 X 0.5	.5000	.50	.33	.30	\$112.00
	MTPM10 - 1	M10 X 1.0	.5000	.50	.33	.30	\$103.00
MTPM10 - 1.25	M10 X 1.25	.5000	.50	.33	.30	\$103.00	
MTPM11	M11 X 2.0	.5500	.50	.33	.35	\$171.00	
MTPM11 - 1.5	M11 X 1.5	.5000	.50	.33	.35	\$153.00	
MTPM12	M12 X 1.75	.6200	.50	.33	.40	\$103.00	
MTPM12 - .75	M12 X 0.75	.6200	.50	.33	.40	\$95.00	
MTPM12 - 1	M12 X 1.0	.6200	.50	.33	.40	\$103.00	
MTPM12 - 1.25	M12 X 1.25	.6200	.50	.33	.40	\$117.00	
MTPM12 - 1.5	M12 X 1.5	.6200	.50	.33	.40	\$117.00	
MTPM13	M13 X 1.5	.6200	.50	.33	.40	\$210.00	
MTPM14	M14 X 2.0	.6800	.60	.43	.40	\$120.00	
MTPM14 - 1	M14 X 1.0	.6800	.60	.43	.40	\$122.00	
MTPM14 - 1.25	M14 X 1.25	.6800	.60	.43	.40	\$122.00	
MTPM14 - 1.5	M14 X 1.5	.6800	.60	.43	.40	\$127.00	
MTPM15 - 1.5	M15 X 1.5	.6800	.60	.43	.40	\$231.00	
MTPM15 - 2.0	M15 X 2.0	.6800	.60	.43	.40	\$231.00	

Quantity Discounts Available!

Continued on next page

	PART NUMBER	THREAD	A	B	C	D	PRICE EACH
<p>METRIC SERIES (CONTINUED)</p>  <p>Quantity Discounts Available!</p>	MTPM16	M16 X 2.0	.7500	.60	.43	.40	\$130.00
	MTPM16 - 1	M16 X 1.0	.7500	.60	.43	.40	\$176.00
	MTPM16 - 1.5	M16 X 1.5	.7500	.60	.43	.40	\$137.00
	MTPM17	M17 X 1.0	.8400	.60	.43	.40	\$231.00
	MTPM17 - 1.5	M17 X 1.5	.8400	.60	.43	.40	\$152.00
	MTPM18	M18 X 2.5	.8700	.60	.43	.45	\$165.00
	MTPM18 - 1.0	M18 X 1.0	.8700	.60	.43	.45	\$137.00
	MTPM18 - 1.25	M18 X 1.25	.8700	.60	.43	.45	\$244.00
	MTPM18 - 1.5	M18 X 1.5	.8700	.60	.43	.45	\$150.00
	MTPM20	M20 X 2.5	.9300	.60	.43	.50	\$150.00
	MTPM20 - 1	M20 X 1.0	.9300	.60	.43	.50	\$150.00
	MTPM20 - 1.5	M20 X 1.5	.9300	.60	.43	.50	\$150.00
	MTPM22 - 1.5	M22 X 1.5	1.0200	.60	.43	.50	\$150.00
	MTPM22 - 2.5	M22 X 2.5	1.0200	.60	.43	.50	\$150.00
	MTPM24 - 1	M24 X 1.0	1.1000	.60	.43	.50	\$150.00
	MTPM24 - 1.5	M24 X 1.5	1.1000	.60	.43	.50	\$202.00
	MTPM24 - 2	M24 X 2.0	1.1000	.60	.43	.50	\$202.00
	MTPM24 - 3	M24 X 3.0	1.1000	.60	.43	.50	\$230.00
	MTPM25 - 1.5	M25 X 1.5	1.2000	.80	.60	.60	\$360.00
	MTPM26 - 1.5	M26 X 1.5	1.2300	.80	.60	.60	\$231.00
	MTPM27 - 1.5	M27 X 1.5	1.2400	.80	.60	.60	\$263.00
	MTPM27 - 2	M27 X 2.0	1.2400	.80	.60	.60	\$204.00
	MTPM28 - 1	M28 X 1.0	1.2800	.90	.65	.80	\$204.00
	MTPM30 - 1.5	M30 X 1.5	1.3800	1.00	.70	.83	\$204.00
	MTPM30 - 2	M30 X 2.0	1.3800	1.00	.70	.83	\$263.00
	MTPM30	M30 X 3.5	1.3800	1.00	.70	.83	\$210.00
	MTPM33 - 1.5	M33 X 1.5	1.5000	1.06	.70	.90	\$237.00
	MTPM33 - 2	M33 X 2.0	1.5000	1.06	.70	.90	\$250.00
	MTPM36 - 1.5	M36 X 1.5	1.6100	1.06	.70	.90	\$420.00
	MTPM36 - 2	M36 X 2.0	1.6100	1.06	.70	.90	\$284.00
	MTPM36 - 4	M36 X 4.0	1.6100	1.06	.70	.90	\$286.00
	MTPM38 - 1.5	M38 X 1.5	1.7200	1.10	.70	.90	\$294.00
	MTPM38 - 2.0	M38 X 2.0	1.7200	1.10	.70	.90	\$394.00
	MTPM39 - 2	M39 x 2.0	1.7800	1.10	.70	.90	\$900.00
	MTPM40 - 1	M40 X 1.0	1.8000	1.10	.70	.90	\$630.00
	MTPM42 - 2	M42 X 2.0	1.8500	1.10	.75	.90	\$320.00

	PART NUMBER	THREAD	A	B	C	D	PRICE EACH
<p>TAPERED METRIC SERIES</p>  <p><i>Quantity Discounts Available!</i></p>	MTPM1.6 - .35 - T	M1.6 X 0.35	.1700	.25	.16	.17	\$163.00
	MTPM2 - T	M2 X 0.4	.1700	.25	.16	.17	\$141.00
	MTPM2.5 - T	M2.5 X 0.45	.2000	.25	.17	.22	\$141.00
	MTPM3 - T	M3 X 0.5	.2000	.25	.17	.24	\$127.00
	MTPM3.5 - T	M3.5 X 0.6	.2500	.25	.17	.28	\$142.00
	MTPM4 - T	M4 X 0.7	.2500	.35	.21	.32	\$127.00
	MTPM5 - T	M5 X 0.8	.3100	.35	.21	.34	\$127.00
	MTPM6 - T	M6 X 1.0	.4000	.40	.25	.42	\$127.00
	MTPM7 - T	M7 X 1.0	.4000	.40	.25	.41	\$141.00
	MTPM8 - T	M8 X 1.25	.4000	.40	.25	.48	\$141.00
	MTPM8 - .75 - T	M8 X 0.75	.4000	.40	.25	.33	\$204.00
	MTPM8 - 1 - T	M8 X 1.0	.4000	.40	.25	.41	\$214.00
	MTPM8 - 1.5 - T	M8 X 1.5	.4000	.40	.25	.54	\$141.00
	MTPM10 - T	M10 X 1.5	.5000	.50	.33	.56	\$141.00
	MTPM10 - 1 - T	M10 X 1.0	.5000	.50	.33	.44	\$153.00
	MTPM10 - 1.25 - T	M10 X 1.25	.5000	.50	.33	.49	\$141.00
	MTPM12 - T	M12 X 1.75	.6200	.50	.33	.60	\$141.00
	MTPM12 - 1 - T	M12 X 1.0	.6200	.50	.33	.43	\$176.00
	MTPM12 - 1.25 - T	M12 X 1.25	.6200	.50	.33	.52	\$141.00
	MTPM12 - 1.5 - T	M12 X 1.5	.6200	.50	.33	.58	\$141.00
	MTPM13 - T	M13 X 1.5	.6200	.50	.33	.53	\$141.00
	MTPM14 - T	M14 X 2.0	.6800	.60	.43	.69	\$141.00
	MTPM14 - 1.25 - T	M14 X 1.25	.6800	.60	.43	.48	\$132.00
	MTPM14 - 1.5 - T	M14 X 1.5	.6800	.60	.43	.55	\$141.00
	MTPM15 - T	M15 X 1.0	.7100	.60	.43	.44	\$148.00
	MTPM16 - T	M16 X 2.0	.7500	.60	.43	.68	\$148.00
	MTPM16 - 1 - T	M16 X 1.0	.7500	.60	.43	.41	\$221.00
	MTPM16 - 1.5 - T	M16 X 1.5	.7500	.60	.43	.54	\$236.00
	MTPM18 - 1.5 - T	M18 X 1.5	.8700	.60	.43	.57	\$214.00
	MTPM20 - 1.5 - T	M20 X 1.5	.9300	.60	.43	.55	\$214.00
	MTPM22 - 1.5 - T	M22 X 1.5	1.0200	.60	.43	.56	\$170.00
	MTPM24 - 1.5 - T	M24 X 1.5	1.1000	.60	.43	.58	\$208.00
	MTPM26 - 1.5 - T	M26 X 1.5	1.2300	.80	.60	.61	\$208.00
	MTPM33 - 2 - T	M33 X 2.0	1.5000	1.06	.70	.74	\$248.00
	MTPM33 - 3.5 - T	M33 X 3.5	1.5000	1.06	.70	1.06	\$305.00
	MTPM36 - 1.5 - T	M36 X 1.5	1.6100	1.06	.70	.90	\$525.00

	PART NUMBER	THREAD	A	B	C	D	PRICE EACH
HELI-COIL® SERIES <i>NOTE: Intended for use prior to installation of Heli-Coil inserts.</i>	HTP0256	2 - 56 UNC	.2000	.25	.17	.15	\$109.00
	HTP0348	3 - 48 UNC	.2000	.25	.17	.15	\$109.00
	HTP0440	4 - 40 UNC	.2500	.25	.17	.18	\$109.00
	HTP0632	6 - 32 UNC	.3000	.34	.20	.20	\$103.00
	HTP0640	6 - 40 UNF	.3000	.34	.20	.20	\$151.00
	HTP0832	8 - 32 UNC	.3000	.34	.20	.20	\$103.00
	HTP0836	8 - 36 UNF	.3000	.34	.20	.20	\$103.00
	HTP1024	10 - 24 UNC	.4000	.40	.25	.25	\$103.00
	HTP1032	10 - 32 UNF	.4000	.40	.25	.25	\$103.00
	HTP2520	1/4 - 20 UNC	.4000	.40	.25	.25	\$131.00
	HTP2528	1/4 - 28 UNF	.4000	.40	.25	.25	\$110.00
	HTP3118	5/16 - 18 UNC	.5000	.50	.33	.30	\$110.00
	HTP3124	5/16 - 24 UNF	.5000	.50	.33	.30	\$110.00
	HTP3716	3/8 - 16 UNC	.6200	.50	.33	.40	\$118.00
	HTP3724	3/8 - 24 UNF	.6200	.50	.33	.40	\$118.00
	HTP4314	7/16 - 14 UNC	.6200	.50	.33	.40	\$180.00
	HTP4320	7/16 - 20 UNF	.6200	.50	.33	.40	\$118.00
	HTP5013	1/2 - 13 UNC	.7000	.60	.43	.40	\$126.00
	HTP5020	1/2 - 20 UNF	.7000	.60	.43	.40	\$118.00
	HTP5612	9/16 - 12 UN	.8000	.60	.43	.50	\$158.00
HTP7510	3/4 - 10 UNC	1.0000	.60	.43	.50	\$158.00	
TAPERED HELI-COIL® SERIES	HTP0256 - T	2 - 56 UNC	.2000	.25	.17	.16	\$213.00
	HTP1032 - T	10 - 32 UNF	.4000	.40	.25	.27	\$221.00
	HTP2528 - T	1/4 - 28 UNF	.4000	.40	.25	.32	\$225.00
	HTP3724 - T	3/8 - 24 UNF	.6200	.50	.33	.40	\$236.00
METRIC HELI-COIL® SERIES	HTPM2.5	M2.5 X 0.45	.2000	.25	.17	.15	\$137.00
	HTPM3 - .5	M3 X 0.5	.2500	.35	.21	.18	\$137.00
	HTPM4	M4 X 0.7	.3100	.35	.21	.20	\$141.00
	HTPM5 - .8	M5 X 0.8	.4000	.40	.25	.25	\$148.00
	HTPM6 - 1	M6 X 1.0	.4000	.40	.25	.25	\$143.00
	HTPM8	M8 X 1.0	.5000	.50	.33	.30	\$150.00
	HTPM8 - 1.25	M8 X 1.25	.5000	.50	.33	.30	\$150.00
	HTPM10	M10 X 1.5	.6200	.50	.33	.40	\$164.00
	HTPM12	M12 X 1.75	.6800	.50	.33	.45	\$173.00
	HTPM14	M14 X 2.00	.7500	.60	.43	.50	\$184.00
	HTPM16	M16 X 2.00	.8600	.60	.43	.50	\$184.00
	HTPM27-2	M27 X 2.00	1.3800	1.00	.70	.73	\$368.00

**Quantity
Discounts
Available!**

	PART NUMBER	THREAD	A	B	C	D	PRICE EACH
NPT PIPE THREAD SERIES	PTP0627	1/16 - 27 NPT	.3300	.35	.21	.30	\$175.00
	PTP1227	1/8 - 27 NPT	.4200	.42	.27	.30	\$175.00
	PTP2518	1/4 - 18 NPT	.6000	.50	.33	.42	\$184.00
	PTP3718	3/8 - 18 NPT	.7000	.60	.43	.43	\$189.00
	PTP5014	1/2 - 14 NPT	.8700	.60	.43	.62	\$197.00
	PTP7514	3/4 - 14 NPT	1.0800	.65	.48	.64	\$217.00
	PTP1.011.5	1 - 11-1/2 NPT	1.3500	.80	.60	.80	\$249.00
	PTP1.2511.5	1-1/4 - 11-1/2 NPT	1.7100	.90	.70	.81	\$368.00
	PTP1.5011.5	1-1/2 - 11-1/2 NPT	1.8200	1.00	.80	.82	\$320.00
NPSF PIPE THREAD SERIES (STRAIGHT)	PTP0627NPSF	1/16 - 27 NPSF	.4000	.40	.25	.25	\$309.00
	PTP1227NPSF	1/8 - 27 NPSF	.5000	.50	.33	.30	\$193.00
	PTP2518NPSF	1/4 - 18 NPSF	.6500	.55	.38	.36	\$168.00
	PTP3718NPSF	3/8 - 18 NPSF	.8000	.60	.43	.43	\$206.00
	PTP5014NPSF	1/2 - 14 NPSF	.9300	.60	.43	.50	\$236.00
NPTF PIPE THREAD SERIES (TAPERED)	PTP0627NPTF	1/16 - 27 NPTF	.3300	.35	.21	.30	\$231.00
BRITISH PIPE THREAD SERIES (STRAIGHT)	BSPP-0125	G 1/8 x 28	.5000	.50	.33	.30	\$336.00
	BSPP-0250	G 1/4 x 19	.6200	.50	.33	.40	\$315.00
	BSPP-0375	G 3/8 x 19	.8000	.60	.43	.43	\$315.00
	BSPP-0500	G 1/2 x 14	.9600	.60	.43	.50	\$368.00
	BSPP-0750	G 3/4 x 14	1.2000	.80	.60	.60	\$347.00
	BSPP-1000	G 1 x 11	1.5000	1.06	.70	.90	\$399.00
	BSPP-1250	G 1-1/4 x 11	1.8500	1.10	.70	.90	\$315.00
	BSPP-1500	G 1-1/2 x 11	2.1000	1.00	.70	.90	\$500.00
BRITISH PIPE THREAD SERIES (TAPERED)	BSPT-0125	R- 1/8 x 28	.4200	.42	.27	.30	\$315.00
	BSPT-0375	R- 3/8 x 19	.7000	.60	.43	.46	\$380.00

**Quantity
Discounts
Available!**

TRUE POSITION LOCATORS
TRU-POS



Have a requirement for an unusual thread size or head configuration? Don't hesitate to call - we may have it in stock! If not, we can manufacture to your specifications. Call for a prompt quotation.

AVAILABILITY: Stock sizes available for immediate delivery. No minimum order is required. Specials can be produced to your specifications.

PACKAGING: Quantities of 5 or more will be shipped in a hardwood box at no additional charge.

DISCOUNTS: For quantities of 6 or more pieces (any mix of series) a discount of 10% will apply. For quantities of 11 or more a discount of 15% will apply. Discounts do not apply to certifications.

CERTIFICATION: A **Certificate of Compliance** is available, if requested at time order is placed, at an additional charge of \$6.00 per item or \$15.00 per lot.

A **Certificate of Calibration** is available, if requested at time order is placed, at an additional charge of \$10.00 per item.

RECALIBRATION: Tru-Pos™ Locators may be returned for recalibration at \$15 per item.

SHIPMENTS: Via U.P.S. unless otherwise requested. FOB Bloomingdale, IL 60108-2637
Prices do not include shipping.

TERMS: U.S. Accounts: COD, MasterCard, Visa, Amex or NET 30 Days (if credit is established).
EXPORT Accounts: MasterCard, Visa, Amex or advanced wire transfer.
Shipments FOB Factory, Bloomingdale, IL 60108-2637 U.S.A.



QUALITY... ABOVE ALL ELSE.

LaVezzi Precision, Inc.

250 Madsen Drive Bloomingdale, IL 60108-2637 U.S.A.

630-582-1230 ■ Fax: 630-582-1238 ■ 800-323-1772

e-mail: lpi@lavezzi.com

www.lavezzi.com

Visit Our Store



Order On-Line!

TRU-POS™ LaVezzi Precision, Inc.

Last Revision: Mar 6, 2017 - Prices subject to change without notice

Page 10 of 10